



# BD50000 RUGGED ENDURANCE



WITH  
HIGHLY  
**ENGINEERED  
MEDIA**

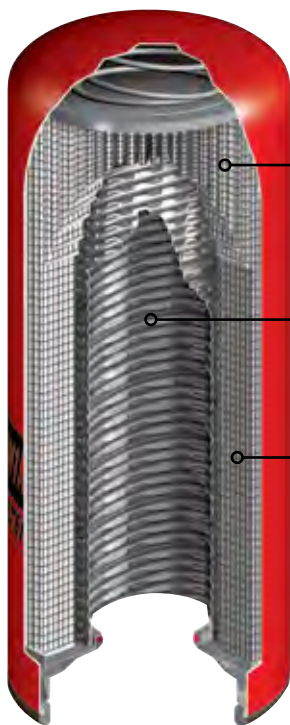


## DURABILITY & PERFORMANCE

# BD50000

Increasingly tougher emission standards coupled with advancements in engine design have led to the development of two new categories of oil (CK-4 and FA-4). With improved oxidation, aeration and sheer stability characteristics these new oil categories are more suited for today's highly efficient engines.

Advanced engine designs mean heavy-duty filtration is critical for maximum protection through the entire recommended service interval. Baldwin Filters' BD50000 is up to the challenge with both the high capacity and extreme efficiency these new oils and engines must have in order to function as designed.



**DOUBLE WIRE-BACKED MEDIA**

Provides pleat stabilization and structural durability to ensure consistent dirt-holding capacity and performance

**CENTERTUBE**

Improved louvers allow greater flow

**HIGHLY ENGINEERED MEDIA**

Provides lower cold-start restriction at startup

## THE FUTURE OF FILTRATION

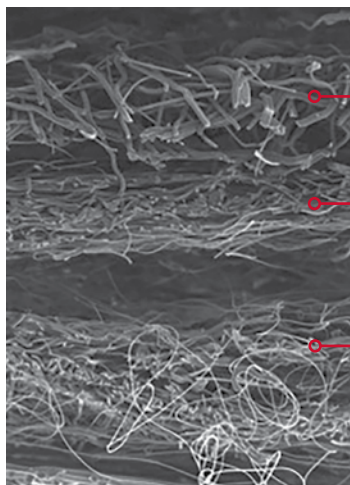
Designed for durability and performance, the BD50000 lube filter, with highly engineered media, is taking filtration into the future for the next generation of engines.

The BD50000 delivers superior contaminant removal efficiency and holding capacity to extend engine life.

## THE NEXT GENERATION OF HIGHLY ENGINEERED LAYERED MEDIA

Baldwin continues to research and develop new technology to keep new oils clean and advanced engines operating at their best.

This next generation of highly engineered media, coupled with precise design, makes the innovative BD50000 the most effective filter, delivering maximum efficiency and durable performance.



**CAPACITY LAYERS**

Allows for less restriction and maximum flow

**EFFICIENCY LAYER**

Traps damaging contaminants of all sizes

# HEAVY-DUTY CONSTRUCTION MEANS **CONSISTENT DURABILITY AND PERFORMANCE**

Baldwin BD50000 is built tough for durability and performance. You can see for yourself, Baldwin puts quality first. The quality construction ensures the BD50000, with double wire-back, synthetic media, withstands high-differential pressure conditions without distorting or collapsing.

**BALDWIN  
BD50000**



**COMPETITOR  
ELEMENT**



**METAL CONSTRUCTION**

more durable,  
less susceptible to  
temperature and  
pressure extremes



**Field Test Sample**  
Retained shape,  
did not collapse or distort

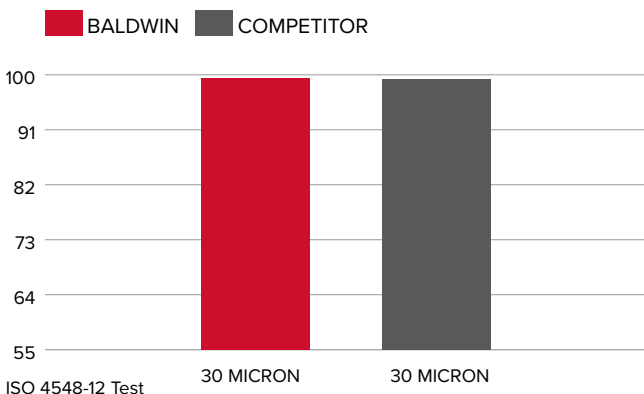


**Field Test Sample**

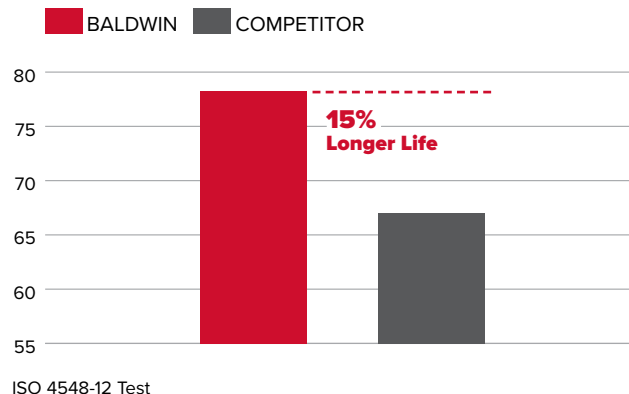
# LONGER FILTER LIFE MEANS **MORE MILES AND MORE SAVINGS**

The BD50000 is efficient at capturing approximately 99% of contaminants 30 microns or larger. Industry standard test results shows the BD50000 has 15% longer life compared to the leading competitor filter. Providing outstanding protection helps ensure maximum engine performance, resulting in better fuel economy, reduced downtime and more money in your pocket.

**EFFICIENCY (%)**



**CAPACITY (g)**



# SUPERIOR PROTECTION FOR MAXIMUM ENGINE PERFORMANCE

## RECOMMENDED SERVICE INTERVALS

<b>Light-Duty</b>	> 7 mpg (3 km/L)	Replace every 35,000 miles (56,000 km)
<b>Medium-Duty</b>	6-7 mpg (2.5 - 3 km/L)	Replace every 25,000 miles (40,000 km)
<b>Heavy-Duty</b>	< 6 mpg (2.5 km/L)	Replace every 15,000 miles (24,000 km)

Refer to engine owner's manual. Always follow OE recommended oil grade and oil change intervals.

- Higher efficiency to better protect your engine throughout the entire service interval
- Lower cold-start restriction to enhance oil flow to vital engine components at startup
- Unsurpassed structural integrity for maximum protection under the most extreme conditions

## CROSS-REFERENCE GUIDE

BALDWIN	OE	DONALDSON	FLEETGUARD	HIFI/JURA	LUBER-FINER	MANN & HUMMEL	RYCO	SF-FILTER	WIX
<b>BD50000</b>	4367100	DBL7900	LF14000NN	SO10142	LFP9001XL	W11022	Z872	SP47414*	WL10107

\* BD50000 (Upgraded Version)

## APPLICATION GUIDE

<b>BD50000</b>	Cummins® ISM, ISX, M11, QSK19, QSM11, QSX15, X15, Signature 600 Engines
----------------	---

Cummins® is a registered trademark of Cummins Inc.

For complete engine filter listings visit [baldwinfilters.com](http://baldwinfilters.com)



800.822.5394 | [baldwinfilters.com](http://baldwinfilters.com)

**Designed and manufactured in the USA.**

Form 600 (R 3/20) © 2020 Baldwin Filters, a Parker Hannifin Company

Printed in the U.S.A.

**WARNING:** These products can expose you to chemicals, including Diisononyl Phthalate, Carbon black extracts, Nickel, 1,3 Butadiene, Ethylene Oxide, Epichlorohydrin, which are known to the State of California to cause cancer, and Bisphenol-A, Ethylene Glycol, Ethylene Oxide, 1,3 Butadiene, Epichlorohydrin, which are known to the State of California to cause birth defects or other reproductive harm. For more information go to [www.P65Warnings.ca.gov](http://www.P65Warnings.ca.gov).